

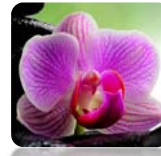
Funerals Your Way

4858 Mercury St.
Suite 201
San Diego, CA 92111
619-550-7807

www.FuneralsYourWay.com
FD: 2188

General Price List

These prices are effective Jan. 1, 2018, and are subject to change without notice.



Prior to drafting any contract for goods and services, the responsible party or the decedent's survivor who is handling the funeral arrangements is entitled to receive a copy of any pre-need arrangement in the possession of the funeral establishment that has been signed and paid for, in full or in part, by or on behalf of the decedent.

The goods and services shown below are those we can provide to our customers. **You may choose only the items you desire.** However, any funeral arrangements you select will include a charge for our basic services and overhead. If legal or other requirements mean you must buy any items you did not specifically ask for, we will explain the reason in writing on the statement we provide describing the goods and services you selected.

Our packages are designed to allow the easy **selection of products**, as they meet the needs of many of our families. As the packages include various types of services, no credit for deletions is allowed.

Professional Services of Funeral Director and Staff

\$ 995.00

Our services include but are not limited to **24-hour availability of our funeral director and staff** to assist the family to the best of our ability. We help you conduct the arrangement conference, planning the funeral, consulting with family and clergy, sheltering of remains, preparing and filing of cemetery, crematory, or other third parties' paperwork. In addition, this fee includes a proportionate share of basic overhead expenses such as administration services, licensing, insurance, taxes, legal fee etc.

Our fee for our basic services and overhead will be added to the total cost of the funeral arrangements you select. This fee is already included in our charges for direct cremations, immediate burials, and forwarding or receiving remains. It may also be included in other packages which we offer.

Staff

Staff for organizing, supervision, setup for graveside, funeral or memorial Services	\$ 399.00
Use of staff services per hour	\$ 100.00
Saturday and Sunday additional	\$ 350.00
Holiday service additional	\$ 400.00
Weekend & Evening arrangement meeting additional	\$ 100.00

Transportation Costs (within 30 mile radius in San Diego County)

Transfer of deceased	\$ 275.00
Additional staff for residential or difficult transfers (per person)	\$ 100.00
Additional charge for over 300 lbs.	\$ 175.00
Transfer of deceased to cemetery or airport in San Diego County (Van)	\$ 300.00
Additional mileage charges (one way per mile)	\$ 3.00

Cremation Services

This charge includes local transfer of the deceased, basic staff services, transportation to crematory, and storage of deceased (up to 3 days), the required permits and fees. Other services and/or merchandise not specified. This does not include any visitation, ceremonies or other services and/or merchandise.

If you want to arrange a direct cremation, you can use an alternative container. Alternative containers encase the body and can be made of materials like fiberboard or composition materials (with or without an outside covering). The most common are **made of heavy cardboard**.

Cremation infants	\$ 150.00
Cremation Adult	\$ 275.00
Cremation fee (300 lbs. and over extra charge - per lb.)	\$ 2.50
Cremation fee for alternative container – in addition to container	\$ 155.00
Air Tray	\$ 195.00
Rush cremation (generally 24 hr. after paperwork is processed)	\$ 250.00
Witnessed cremation (in addition to other costs)	\$ 295.00
Personal delivery of cremains to family (within 25 miles of Office)	\$ 95.00
Mailing of cremains to family by registered mail	\$ 150.00
Mailing of cremains internationally (plus mailing charge + embassy charges)	\$ 100.00
Removal of pacemaker or similar	\$ 95.00

Embalming

Except in **certain special cases**, embalming is not required by California law. Embalming may be necessary, however, if you select certain funeral arrangements, such as a funeral with viewing. If you do not want embalming, you usually have the right to choose an arrangement which does not require you to pay for it, such as direct cremation or immediate burial.

Standard	\$ 450.00
Autopsied or donor	\$ 475.00
Bone donor	\$ 555.00
Green embalming (added to any of above)	\$ 95.00

Preparation and Care of the Deceased

Sanitation of un-embalmed remains (when viewing requested)	\$ 90.00
Dressing	\$ 60.00
Hair Dressing	\$ 75.00
Restorative work/art when requested (per hr.)	\$ 90.00
Additional care of autopsied remains for viewing	\$ 175.00
Additional care of organ and/or tissue donation	\$ 175.00
ID Viewing in hospitality room	\$ 275.00
Makeup (cosmetics).....	\$ 75.00
Casketing	\$ 55.00
Getting fingerprint	\$ 30.00
Hair color (family to supply dye)	\$ 55.00
Lock of Hair	\$ 30.00
Rush preparation	\$ 150.00
Refrigeration of deceased (up to 72 hrs.)	\$ 0.00
Refrigeration after 72 hrs. (If not embalmed per day)	\$ 50.00

[Required by California law CCR 1223.1[d]]

Transfer Remains to Funeral Establishment \$ 495.00

Transfer of remains to a mortuary (within a 30-mile radius) additional charge of \$ 3/mile over 30 miles

Forwarding Remains to another Funeral Establishment	\$ 1595.00
--	-------------------

Removal from place of death, embalming, preparation and local transportation. (Airline charges, shipping container are additional charges). This charge includes temporary shelter of remains and basic services.

Receiving of Remains from Funeral Establishment	\$ 1095.00
--	-------------------

Basic professional services of staff, transportation from airport, transportation to local cemetery or crematory, sheltering of remains. Does not include crematory, burial cost or any viewing.

Other Services

Disinterment basic charge (additional charges may apply)	\$ 995.00
Ziegler Case	\$ 499.00
Combo Unit	\$ 250.00
Musician	\$ 250.00
Hospitality room per hour	\$ 150.00
Splitting of cremains (urn extra)	\$ 30.00
Transfer of cremains to another container	\$ 15.00
Memorial book	\$ 50.00
Prayer cards (multiples of 50-starting).....	\$ 75.00
Service programs (multiples of 50 - starting).....	\$ 95.00

Vehicle Cost

Hearse (up to 30 miles - for 4 hours)	\$ 550.00
Limousine (8 passengers - up to 30 miles - for 3 hours)	\$ 400.00
Utility vehicle or flower vehicle (up to 30 miles)	\$ 100.00
Vehicle overtime charge (per hour)	\$ 90.00
Motor escort (each)	\$ 175.00

Caskets

Complete adult list is provided both on-line and at our place of business	\$540.00 - \$9,820.00
Rental Casket with insert included	\$ 849.00

Urns

Complete list is provided both on-line and at our place of business	\$44.95 - \$ 2895.00
---	----------------------

Miscellaneous Permits and Fees

Disposition permit (each)	\$ 12.00
Certified copies of the death certificate (each)	\$ 21.00
Fetal death certificate (each)	\$ 18.00
Medical examiner's transfer fee (each – varies per county)	\$ 280.00
Consumer's affairs fee	\$ 9.00
Processing Insurance claim (per company)	\$ 195.00
Consulate processing fee (plus consulate & transportation fee)	\$ 395.00
Nonsufficient check fee	\$ 45.00
Clergy honorarium	\$ 250.00
Refiling (permit fee additional)	\$ 80.00

This General Price List does not include items that you may wish us to purchase for you such as cemetery services, flowers etc. These will be shown on your statement.

Budget Cremation Package - \$795

It includes **everything you need** to attend to the physical remains of your loved one.

- + Coordination with doctor/hospital
- + Medical Examiner coordination
- + Taking deceased into our care
- + Climate controlled holding area
- + Filing legal paperwork
- + Transfer to crematory
- + Basic container for cremation
- + Individual cremation
- + Container for cremains
- + Disposition permit (1)
- + Released to family
- + Notify social Security
- + Death Notice
- + Plant a tree in honor of deceased



On occasion, **additional fees may be required** for issues such as; 1.) Cremation and transport cost for individuals in excess of 300 pounds 2.) Memorial Service and/or Interment 3.) Shipping of cremated remains to the family 4.) Residential transfers may be slightly more.

Veteran Cremation – Miramar Interment Package - \$1295

It includes **everything you need** to attend to the physical remains of your loved one and to have the loved one interred in Miramar nation Cemetery with honors. Staff will be in attendance.



- + Coordination with doctor/hospital
- + Medical Examiner coordination
- + Taking deceased into our care
- + Climate controlled holding area
- + Filing legal paperwork
- + Transfer to crematory
- + Basic container for cremation
- + Individual cremation
- + Container for cremains
- + Disposition permit (1)
- + Notify Social Security
- + Death Notice
- + Plant a tree in honor of deceased
- + Scheduling interment
- + Scheduling honors ceremony
- + Scheduling live bugle player
- + Sheet bronze urn - insignia / name

On occasion, **additional fees may be required** for issues such as; 1.) Cremation and transport cost for individuals in excess of 300 pounds 2.) Memorial Service and/or Internment 3.) Shipping of cremated remains to the family 4.) Residential transfers may be slightly more.

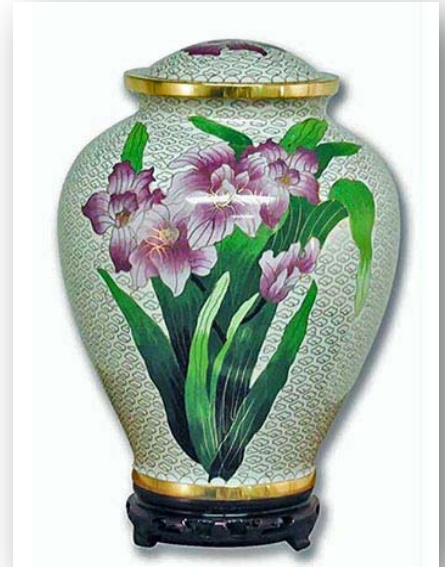
Standard Cremation with Viewing and Service (closed casket) – \$ 3195

This is our **total traditional cremation closed casket package**. We can help with **keepsakes, urns, jewelry** and any other options.

This includes everything in “Budget Cremation Package” with the addition of the following;

- + Embalming (standard)
- + Dressing, casketing
- + 1-hour service
- + Notify Social Security
- + Death Notice
- + Plant a tree in honor of deceased

On occasion, **additional fees may be required** for issues such as; 1.) Cremation and transport cost for individuals more than 300 pounds 2.) Memorial Service and/or Interment 3.) Shipping of cremated remains to the family 4.) Residential transfers may be slightly more.



Standard Cremation with Viewing and Service (open casket) – \$ 3495

This is our **total traditional open casket cremation package**. We can help with **keepsakes, urns, jewelry** and any other options.

This includes everything in “Budget Cremation Package” with the addition of the following;

- + Embalming (standard)
- + Dressing, cosmetics, hair, casketing
- + 1-hour visitation (open casket)
- + 1-hour service (service immediately after visitation)
- + Notify Social Security
- + Death Notice
- + Plant a tree in honor of deceased

On occasion, **additional fees may be required** for issues such as; 1.) Cremation and transport cost for individuals more than 300 pounds 2.) Memorial Service and/or Interment 3.) Shipping of cremated remains to the family 4.) Residential transfers may be slightly more.

Cremation with Burial at Sea – Up to 6 People - \$1440

This package includes all items of **Budget Cremation Package** as well as ash scattering at sea. The following items are included;



- ✚ Budget Cremation Package
- ✚ Luxury Yacht for Sea Burial (2 hours)
- ✚ Rose Pedals
- ✚ Facilitator
- ✚ Memorial Certificate
- ✚ Notify Social Security
- ✚ Death Notice
- ✚ Plant a tree in honor of deceased

Cremation with Burial at Sea – Up to 48 People - \$3895

This package includes all items of **Budget Cremation Package** as well as ash scattering at sea. The following items are included;

- ✚ Budget Cremation Package
- ✚ Luxury Yacht for Sea Burial – (3 hours)
- ✚ Rose Pedals
- ✚ Rose for each person
- ✚ Wreath
- ✚ Facilitator
- ✚ Snacks
- ✚ Notify Social Security
- ✚ Death Notice
- ✚ Plant a tree in honor of deceased



Prices start at \$95 for an unattended scattering.

We can accommodate almost any number of people on our various yachts. We do have reduced pricing for smaller groups, unattended or viewing from shore. This are prices for the San Diego Point Loma area.

Immediate Burial - \$1295

It includes everything you need to attend to the physical remains of your loved one. This package includes local transfer of the deceased, basic professional staff services, storage of deceased (up to 3 days), and transportation to cemetery by service van at mortuary convenience. Burial will be **witnessed by our staff**.

Burial is completed at the convenience of the cemetery. This **does not include containers, caskets or embalming which are additional charges**. This is an unattended burial.



Direct Burial with Services at Cemetery - \$1795

Your family wishes to have a casket as well as a short committal at the grave side. The family will need to **purchase an appropriate casket**.

- ✦ Coordination with doctor/hospital
- ✦ Medical Examiner coordination
- ✦ Taking deceased into our care
- ✦ Climate controlled holding area (3 days)
- ✦ Filing legal paperwork
- ✦ Casketing
- ✦ Directing Funeral Services at committal at cemetery
- ✦ Funeral Hearse (2 hrs.)
- ✦ Flower care and driver
- ✦ Disposition Permit (1)
- ✦ Notify Social Security
- ✦ Death Notice
- ✦ Plant a tree in honor of deceased

Traditional Burial (Closed Casket) with Services - \$2695

Your family wishes to have a service with a casket as well as a short committal at the grave side. The family will need to **purchase an appropriate casket**.

- ✦ Coordination with doctor/hospital
- ✦ Medical Examiner coordination
- ✦ Taking deceased into our care
- ✦ Refrigerated storage (5 days)
- ✦ Embalming (standard)
- ✦ Casketing, dressing, cosmetic care, hair, makeup
- ✦ Directing funeral service at venue and committal directly after
- ✦ Funeral Hearse (4 hrs.)
- ✦ Flower car and driver
- ✦ Disposition Permit (1)
- ✦ Memorial Book
- ✦ Notify Social Security, Death Notice and Plant a tree in honor of deceased

Traditional Burial (Open Casket) with Services - \$2975

Your family wishes to have a service with a casket as well as a short committal at the grave side. The family will need to **purchase an appropriate casket.**

- ✚ Coordination with doctor/hospital
- ✚ Medical Examiner coordination
- ✚ Taking deceased into our care
- ✚ Refrigerated storage (5 days)
- ✚ Embalming (standard)
- ✚ Casketing, dressing, cosmetic care, hair, makeup
- ✚ Directing funeral Service at venue and committal directly after at cemetery
- ✚ Funeral Hearse (4 hrs.)
- ✚ Flower car and driver
- ✚ Disposition Permit (1)
- ✚ Memorial Book
- ✚ Notify Social Security, Death Notice
- ✚ Death Notice
- ✚ Plant a tree in honor of deceased

Method of Payment

Payment for all goods and services is expected at the time of arrangement and is **required before cremation or casketing**. We accept most forms of payment such as cash, check or credit card. For credit cards, there will be an **addition fee for credit card processing at 3%**.

For more information on Funeral, Cemetery, and Cremation matters

The only warranty of the casket, urn or any merchandise sold is the express written warranty, if any, granted by the manufacturer. This funeral service makes no warranty, express or implied, including an implied warranty of fitness for a particular purpose, with respect to the casket and/or other merchandise.

Disclaimer of Warranty

Department of Consumer Affairs,
Cemetery and Funeral Bureau
1625 N. Market St., Suite S-208
Sacramento, CA. 95834
(916) 574-7870